

TU-E series ultrasonic cell crusher(touch screen)

Instrument description:

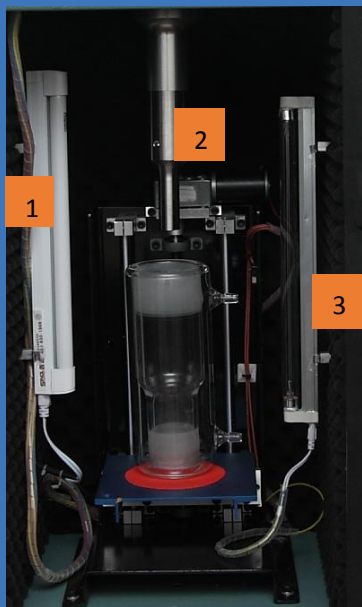
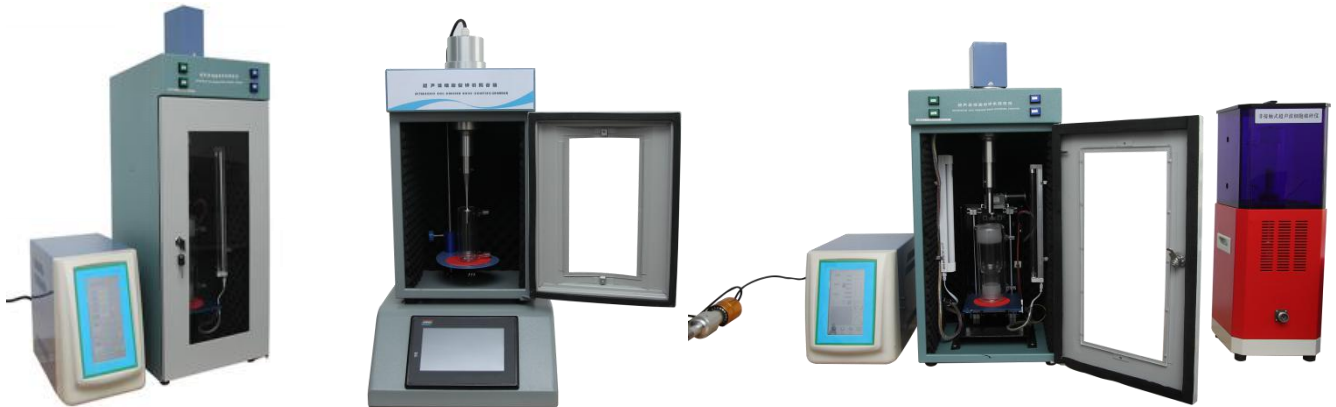
Ultrasonic cell disruption system (crusher) is a multi-function & multi-purpose instrument, which use high strength ultrasonic to cause cavitation effect in liquid, for material ultrasonic processing. It could be used to crush a variety of animal & plant cells, viruses cells, also suitable for emulsification, separate, homogenization, extraction, defoaming, cleaning and speed up chemical reaction,etc.

Application: biological chemistry, microbiology, medicinal chemistry, surface chemistry, physics, zoology,etc.

technical parameters:

Model	TU-150E	TU-250E	TU-650E	TU-900E	TU-1000E	TU-1200E	TU-1800E
Frequency (KHz)	20-25KHz Automatic tracking	20-25KHz Automatic tracking	20-25KHz Automatic tracking	20-25KHz Automatic tracking	20-25KHz Automatic tracking	19.5-20.5KHz Automatic tracking	19.5-20.5KHz Automatic tracking
Power(W)	2-150W adjustable	5-250W adjustable	5-650W adjustable	10-900W adjustable	10-1000W adjustable	20-1200W adjustable	20-1800W adjustable
Horn (mm)	Φ6	Φ6	Φ6	Φ6 or 10	Φ6 or Φ10	Φ20	Φ20 or Φ22
Optional Horn (mm)	Φ2、Φ3、Φ8、 Φ10	Φ2、Φ3、Φ8、 Φ10	Φ2、Φ3、Φ8、Φ10、 Φ12	Φ2、Φ3、Φ8、 Φ10、Φ12、Φ15	Φ2、Φ3、Φ8、 Φ10、Φ12、 Φ15、Φ20	Φ6、Φ10、 Φ15、Φ22、 Φ25	Φ10、Φ15、 Φ20、Φ25、 Φ28
Disruption Capacity(ml)	0.1-150	0.1-250	0.2-500	0.2-600	0.1-800	10-1200	50-1500
Input method	Touch control						
Display	7 inch TFT						
Display items	Temperature, power, wave form, amplitude, pulse, time etc, total 10 items.						
Protection device	Self-diagnostic function, program automatic error correction, over-load / over- temp. Protection display,etc.						
Login password protection	Have						
Computer on-line function	Optional						
Sound proof box	Illumination, sterilization, automatic lifting, etc function.						
Other function	Date storage 20 sets, print, ultrasonic interval / continuously etc function.						

TU-E series ultrasonic cell crusher(touch screen)



- 1 Illuminating system (optional)
- 2 Electric automatic lifting system (optional)
- 3 Sterilization system (optional)

Ultrasonic cell crusher

Ultrasonic material dispenser

Ultrasonic Cleaner

Ultrasonic horn selection guide parameters:

Model Chinese standard	English system	Frequency (KHz)	Suggest power range reference value	Crush capacity reference value
Φ2	1/12"	20-25KHz	min-150W	0.2-5ml
Φ3	1/8"	20-25KHz	min-250W	3-10ml
Φ6	1/4"	20-25KHz	20-400W	10-100ml
Φ10	5/12"	20-25KHz	100-600W	30-300ml
Φ12	1/2"	20-25KHz	200-900W	50-500ml
Φ15	5/8"	20-25KHz 19.5-20.5KHz	300-1000W	100-600ml
Φ20	4/5"	19.5-20.5KHz	400-1100W	100-1000ml
Φ22	5/6"	19.5-20.5KHz	400-1100W	200-1000ml
Φ25	1"	19.5-20.5KHz	800-1500W	500-1200ml